



Thank you for purchasing our product. Before installing/operating the product, please read the instructions carefully and retain them for future reference.

⚠ Attention!

- For installation, please follow the steps described. Any damage caused by wrong installation shall be imputed to the users.
- To avoid a short circuit from occurring do not pull or modify the wires during installation.
- Do not disassemble or change any parts. Opening and dissassembling this unit will void any warranty.
- Maintenance and repairs should be executed by our professionals only.

Symbol description:

NOTE

⚠ Some procedures must be followed to avoid damages to the instrument.

⚠ **WARNING!** Certain procedures must be followed to avoid damages to yourself, to the vehicle or others.

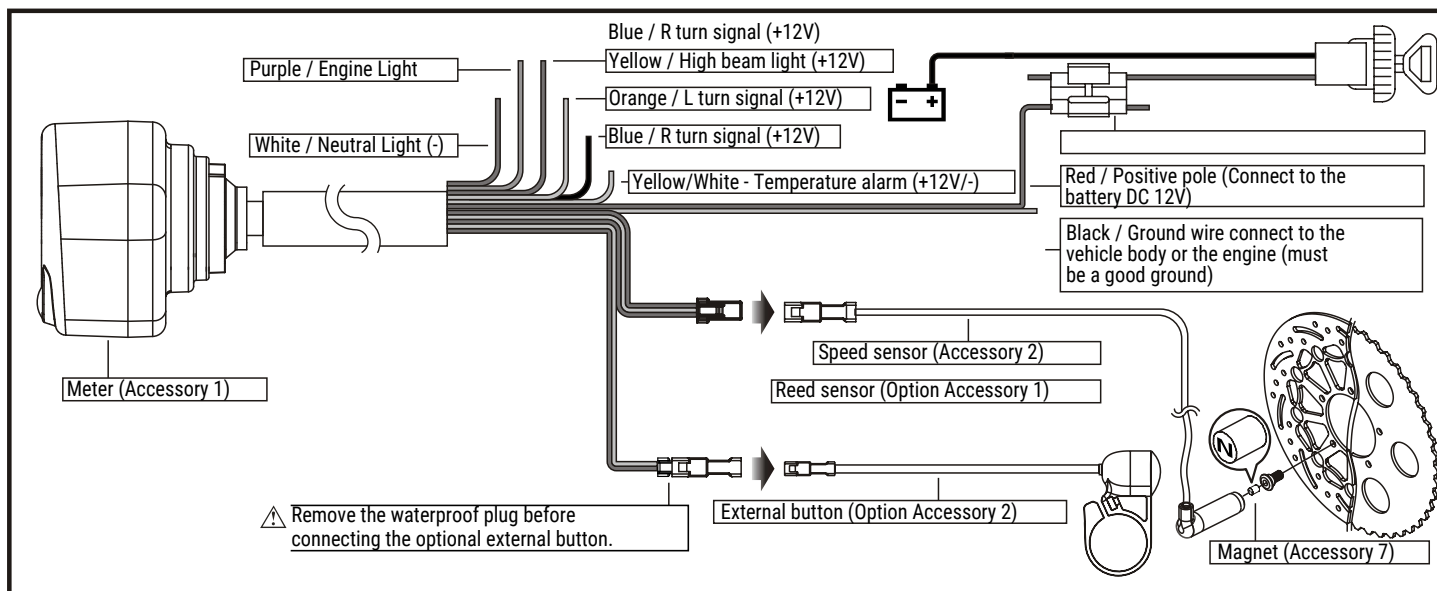
1-1 Accessories

1 Meter X 1 	2 Speed sensor X 1 	3 M8 / S type speed sensor bracket x 1 	4 M10 / S type speed sensor bracket x 1
5 M5 x 5L Hexagon socket screw x 2 	6 D6x5 mm magnet x 6 	7 Meter bracket x 1 set 	8 M4 x 10 screw x 2
9 M5 x 15 screw x 2 	10 M5 Washer x 2 	11 2.5 mm Allen key x 1 	12 3 mm Allen key x 1
13 4 mm Allen key x 1 	14 Mid-way connector x 8 		

1-2 Optional accessories

1 Reed Sensor 	2 External button
--------------------------	------------------------------

2-1 Wiring installation



Motorcycle "S" type speed sensor bracket



Put the magnet into the brake disc screw hole.



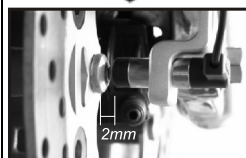
Install the S type sensor bracket.



Adjust the sensor bracket position to make sure the sensor is facing the magnet to receive good speed signal.



Install the speed sensor on the bracket.

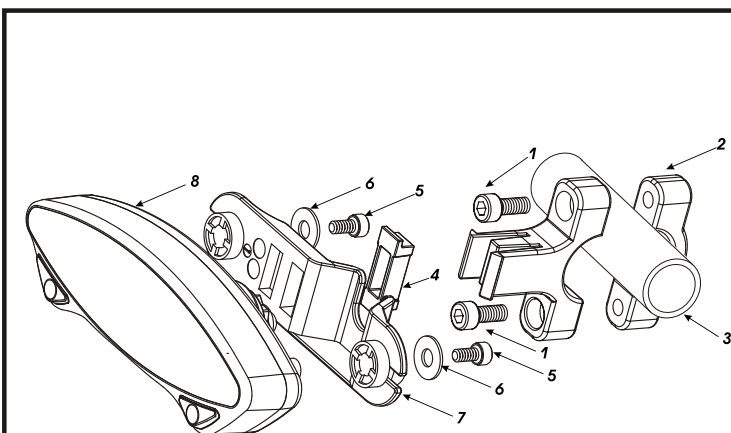


In order to get a good speed signal, the distance between the speed sensor and magnet should be under 5 mm.

⚠ When using the electronic speed sensor (Hall sensor), the meter must connect to DC12V power source instead of using the inner battery.

⚠ When using the Reed speed sensor, the meter will work using the inner battery.

2-2 Installation

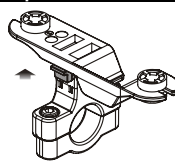


Follow the steps below during installation.

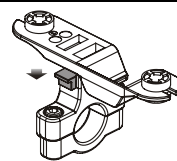
1. M5 X 15 screw X 2 (acc. 9)
2. Meter bracket (acc. 7)
3. Fix the bracket on handle bar
4. Meter bracket clip (acc. 7)
5. M4 X 10L screw X 2 (acc. 8)
6. M5 washer X 2 (acc. 10)
7. Meter board (acc. 7)
8. Meter (acc. 1)

NOTE Adjust the meter to the proper angle before tightening the handle bar bracket screws.

Special instruction for meter fixed board



A. Push meter bracket clip up to lock meter board (with meter on bracket)




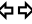



B. Push meter bracket clip down to release meter board (with meter on bracket)

2-3 Basic functions

Speedometer

- Display range: 0-360 km/h (0-225mph)
- Display unit: km/h (MPH).

Indicator lights

- High beam (blue) 
- Turn signal (green) 
- Check engine (yellow) 
- Neutral (green) 
- Warning light (red) 

Odometer

- Display range: 0-99,999 km (mile), automatic reset after 99,999 km (mile).
- Display unit: 1 km (mile).

Trip meter

- Display range: 0-9999.9 km (mile), automatic reset after 9999.9 km (mile).
- Display unit: 0.1 km (mile).



Select button

- Press the **Select button** on the main screen to switch between 12 / 24 hour mode, speedometer record, stopwatch, and MAX record.

- Clock: 12-24 Mode
- Volt meter: DC 8-18V
- Stopwatch function: can be either programmed for manual activation or by wheel activation
- MAX Record function: Average speed: 0-360 km/h (0-225 MPH) MAX Speed: 0-360 km/h (0-225 MPH) MAX voltage: DC 8-18 V

- Inner battery display range: 4 levels

Adjust button

- Press the **Adjust button** on the main screen to switch between ODO, TripA / B, Total Hour meter, Total meter A / B.

2-3 Function Specifications

● Speedometer	Display range: 0 ~ 360 km/h (0 ~ 225 MPH) Display unit: 1 km/h or MPH for alternative	● Stopwatch	Display range: 0'00"00 ~ 9'59"99 Display unit: 0.01 sec.
● Display internal	<0.5 second	● MAX speed record	Display range: 0 ~ 360 km/h (0 ~ 225 MPH)
● Odometer	Display range: 0 ~ 99,999 km (mile), automatic reset after 99,999 km (mile) Setting unit: 1 km (mile)	● Average speed record	Display range: 0 ~ 360 km/h (0 ~ 225 MPH)
● Trip meter A / B	Display range: 0 ~ 9,999.9 km (mile), automatic reset after 9,999.9 km (mile) Display unit: 0.1 km (mile)	● MAX speed record	Display range: DC 8 ~ 18 V
● Oil maintenance mileage	Setting range: 300 ~ 5,000 km (mile) Setting unit: per 100 km (mile) automatic reset after 5,000 km	● Inner battery level	Display range: 4 levels
● Hour meter	Display range: 99,999 hour Display unit: 0.1 hour	● Clock	12 / 24 H
● Hour meter A / B	Display range: 9,999.9 hour, automatic reset after 9,999.9 hour Display unit: 0.1 hour	● Volt meter	Display range: DC 8.0 ~ 18.0 V Display unit: 0.1 V
		● Effective voltage	DC 12 V
		● Effective temperature range	-10 ~ +60 °C
		● Meter standard	JIS D 0203 S2
		● Meter size	120 X 40 X 23 mm
		● Meter weight	Around 127.3 g
		● Indicator light color	Turn signal (Green) / Neutral (Green) Warning Light (Red) / Check Engine (Yellow) High beam light (Blue)

NOTE Design and specifications are subject to change without notice!

2-5 Battery replacement

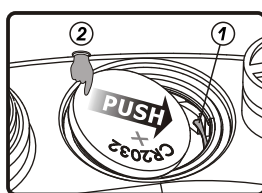
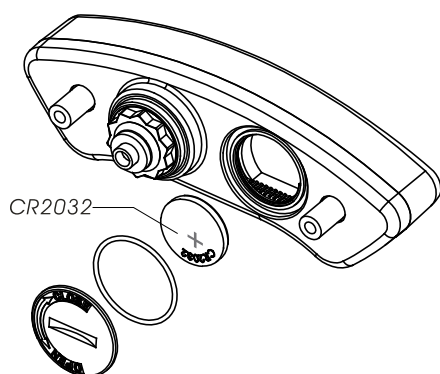


Figure A

Follow this procedure for proper installation.

- The meter includes an internal battery (CR2032). This battery shall be replaced only when power runs out.
- To install the battery properly, push the battery as shown on figure A to make sure the battery is placed **underneath the metal tab (1)**

Not following this procedure could result in permanent damage to the meter.

3 Switch function

● Instructions for the Select button

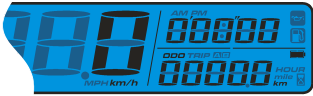


- Press the **Select button** to switch from Clock to Stopwatch.

- Press and hold the **Select button** for **3 seconds** to alternate between 12/24 hour modes.



NOTE When the 24h mode is selected, the AM/PM symbol will not be displayed



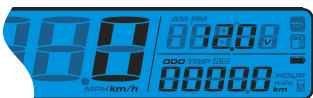
- Press the **Select button** to switch from Stopwatch to Voltmeter.

NOTE When the option for manually resetting the stopwatch is chosen, press the Select button and hold for 6 sec to switch to Voltmeter.

- Press and hold the **Select button** for **3 seconds** to reset Stopwatch.

NOTE If the button setting is "ON", then press the Select button to start counting and press again to stop.

NOTE If the button setting is "OFF", then press the external button (optional) to start counting and press again to stop.



- Press the **Select button** to switch from Voltmeter to Speed Record.



To switch from Stopwatch to Speed Record, you must have a record for the Stopwatch (do not reset the Stopwatch). When the Stopwatch is reset, pressing the **Select** or the **external button** will start the Stopwatch again.

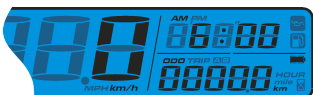


- Press the **Select button** to switch from Speed Record to Clock meter.

- Press and hold the **Select button** for **3 seconds** to reset the Speed Record.

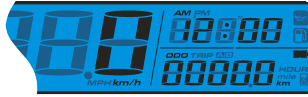


NOTE When Maintenance Symbol is "ON", reset under this function screen.



- Back to Clock screen.

● Instructions for the Adjust button



- While on main screen, press the **Adjust button** once to switch the function from odometer to trip A.

- While on odometer screen, press and hold the **Adjust button** for **3 seconds** to change the speed unit.



- Press the **Adjust button** to switch from trip A to trip B.

- Press and hold the **Adjust button** **3 seconds** to reset the trip A.

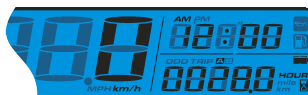


- Press the **Adjust button** to switch from trip B to total hour meter.

- Press and hold the **Adjust button** **3 seconds** to reset the trip B.



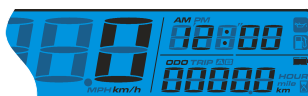
- Press the **Adjust button** to switch from total hour meter to hour meter A.



- Press the **Adjust button** to switch from hour meter A to hour meter B.

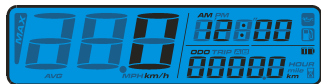


- Press the **Adjust button** to exit from Hour Meter B and to go back to odometer screen.

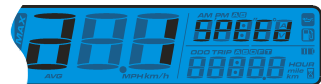


- Back to odometer screen.

4 Setting mode



- While on main screen, press the **Adjust and Select** buttons for **3 sec.** to enter the tire circumference and sensing point settings (to set a different tire size).



- Use the **Adjust** button to set the proper tire circumference.

4-1 The tire circumference and sensing point setting



- Ex:** The tire circumference is 1300 mm.
- Press the **Adjust** button to move to the digit you want to set.



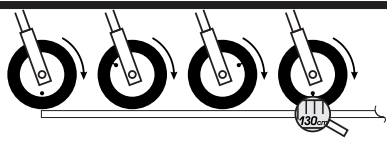
NOTE

The tire circumference setting range is from 300 to 2500 mm.

NOTE Default setting: 1000 mm

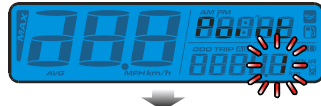
P.S.

- You can define the valve as the starting point and the terminal point to measure the wheel circumference with a measuring tape.



- Ex:** The tire circumference setting is changed from 1000 mm to 1300 mm
- Press the **Adjust** button to change the setting:
- Press the **Adjust** button 3 times to enter the sensing point setting.

4-2 Sensing point setting



- Ex:** To change the sensing point to 6.

NOTE The sensing point range is from 1 to 6 points

NOTE Default value: 1



- Ex:** To change the sensing point from 1 to 6.
- Press the **Select** button to choose the hour you want to set.
- Press the **Adjust** button to go back to tire circumference & sensing point setting screen.

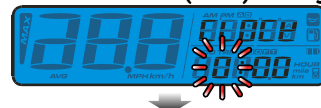


- To switch from (a) 1 to (a) 2 screen.



- Press the **Select** button to enter the Clock setting (hour).

4-3 The clock (Hour) setting



- Ex:** To set the hours to 14.
- Press the **Select** button to choose the hour you want to set.



NOTE Setting Range: 0~24h.



- Ex:** To change the hours from 0:00 to 14:00.
- Press the **Adjust** button to enter the minute setting.

4-4 The clock (minute) setting



- Ex:** To change to 14:05.
- Press the **Select** button to choose the minute setting.



NOTE Setting range: 0~59 minutes.

Ex: After the time is changed to 14:05.



- Press the **Adjust** button to go back to the clock setting.



- To switch from (a) 2 to (a) 3 screen.



- Press the **Select** button again to enter the Stopwatch setup.

4-5 Stopwatch setup



- Press the **Adjust** button to choose between Auto mode (Stopwatch start/stop according to the wheel rotation) and Manual mode (Stopwatch start/stop by using the meter button or optional thumb switch).
- If Auto option is selected, press **Adjust** button to exit the Stopwatch setup



NOTE Default value: AUTO



- If Manual mode "SW" (switch) option is chosen, press Adjust button to enter the menu then Select button to switch between "ON" (external button - optional) or "OFF" (meter button).



NOTE Default value: OFF



- Press the **Adjust** button to enter the ODO setting.



- To switch from (a) 3 to (a) 4 screen.

4-6 Maintenance Oil light sensing



- Ex:** Select ON/OFF to enable/disable the maintenance oil light function.
- If set to OFF, press the **Adjust** button once to exit the maintenance mileage setting.



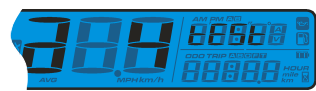
NOTE Default value: OFF



- If set to ON, press the **Adjust** button to enter the maintenance oil light setting.
- Press the **Adjust** button to move the cursor to the digit to be set.



- If set to OFF, press the **Adjust** button once to exit the maintenance oil light setting.



● To switch from (a) 4 to (a) 5 screen.



● Press the **Adjust** button to enter the Backlight Brightness setting.

● 4-7 Backlight brightness



● Ex: To change the Backlight Brightness setting to 1.
● Press the **Select** button to adjust the brightness of the backlight.



NOTE Adjustable Range: 1 ~ 5.

NOTE Default value: 5



● Ex: To change the Backlight setting from 5 to 1.
● Press the **Adjust** button to confirm & exit the Backlight Brightness setting.



● To switch from (a) 5 to (a) 6 screen.



● Press the **Adjust** button to enter the ODO setting.

● 4-8 Warning light signal

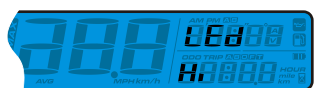


● Ex: To set the signal type of the Warning light (+12V = Hi; GND = Lo)
● Press the **Select** button to choose the signal type.

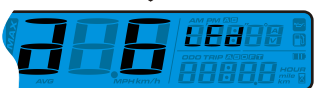


NOTE Warning light signal type: Hi / Lo

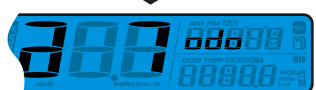
NOTE Default: Lo



● Ex: To change the Warning light setting from Lo to Hi
● Press the **Select** button to choose the signal type.



● To switch from (a) 6 to (a) 7 screen.



● Press the **Adjust** button to enter the ODO setting.

● 4-9 ODO setting.



● Press the **Adjust** button again to view the actual meter mileage under Total.

● Ex: To set the customized mileage adjustment under USER.

● Press the **Adjust** button to switch from Total ODO to User ODO setting



● Ex: To change the ODO setting of 5 000 km

● Press the **Adjust** button to enter the desired ODO value.

● Ex: To set the User ODO 3 000km

● Press the **Adjust** button to move the cursor to the digit to be set.



NOTE Setting range: 00, 000~99, 9999 km
Setting unit: 1mm.

NOTE Default value: 0

● Press the **Select** button to choose the digit to set.



● Press the **Adjust** button to go back to the ODO viewing display.

● Press and hold the **Adjust** and **Select** button for 3 sec. to exit and go back to the main screen.



● Back to the main screen.

5 Trouble shooting

The following situations do not necessarily indicate malfunction of the product. Check the following points, before contacting us.

Trouble	Check item	Trouble	Check item
The meter doesn't work when the power is on.	<ul style="list-style-type: none"> ● The power isn't supplied to the meter. → Make sure the wiring is connected. The wiring and fuse are not broken. → The battery is too old to supply needed power (DC 12 V). 	Clock is incorrect	<ul style="list-style-type: none"> ● Wirings for the connector may be poorly installed. → Check if the positive wire (Red) is connected to the battery and the main switch positive (Brown) is connected to the main switch.
The meter shows wrong information.	<ul style="list-style-type: none"> ● Check the voltage of your battery, and make sure the voltage is over DC 12 V. 	Battery power lower than lever 1.	<ul style="list-style-type: none"> ● May be due to insufficient power. → Replacement of the internal battery may be necessary.
Speed doesn't appear or appears incorrectly.	<ul style="list-style-type: none"> ● Make sure the speed sensor is connected properly. ● Check the tire size setting. → refer to section 4-1. 		

❗ If the problems still can't be solved, please contact our technical department for assistance.