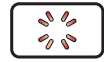




• Thank you for purchasing KOSO heated grips. Before installing, read the instructions carefully and retain them for future reference.

⚠ Attention!

- For installation, follow the steps on the instruction sheet. Any damage caused by faulty installation shall be imputed to the user.
- Don't break or modify the wires. To avoid a short circuit, do not pull the wires out of the terminals during installing.
- Do not disassemble, alter or change any parts.
- Maintenance or repairs should be executed by our professionals.



FLASH



LIGHT ON



PRESS THE
BUTTON
ONCE



PRESS THE
BUTTON 3
SECONDS

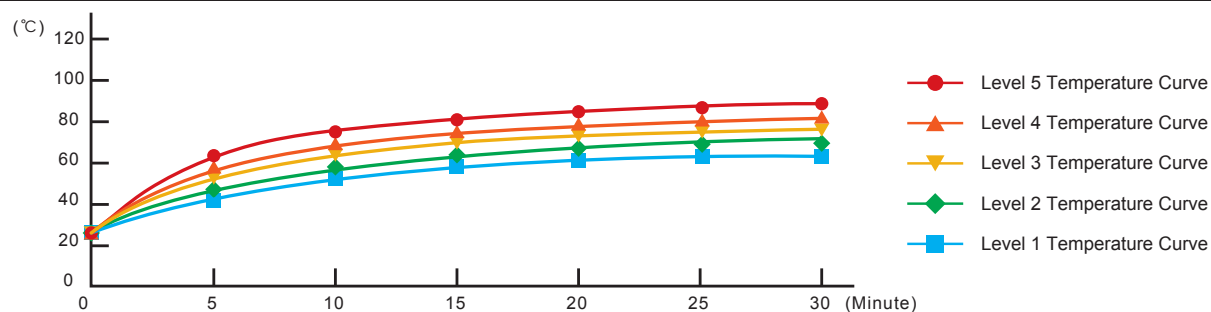
1 Accessories

1 Heated grip X2 	2 G type switch X1 	3 Connecting wire X1 	4 Thumb heater X1
5 Thumb heater wiring X1 	6 LCD Switch Clamp X1 	7 Locking Mount X 1 	8 Screw X2
9 M3XP0.5X25L screw X1 	10 M3 nut X1 	11 Heat shrink X1 	12 Foam X1
13 Abrasive paper X1 	14 3M double-sided adhesive X1 	15 Bar-end cap X2 	16 Glue X1

2-1 Specifications

	● Heating stage	1st stage (low) ~ 5th stage (high)
	● Fuse type	4A (ATP)
	● Effective temperature range	JIS D 0203
	● Voltage	DC 12 V
	● Switch size	W38.2 X L38.2 X H16.5 mm
	● Switch weight (with wire)	About 88 g
NOTE Design and specifications are subject to change without notice.		

2-2 Heated grip testing data

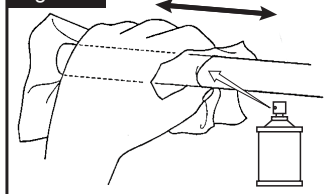


NOTE The testing environment is under 26 Degrees Celsius, with working voltage of 13.5 V.

3-1 Practical installation instruction

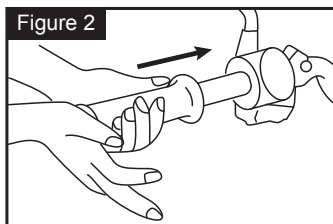
Heated grips installation procedure

Figure 1



1. Use an appropriate tool to remove the original handle-bar grips.
2. Apply a cleaning agent and wipe back and forth to remove the glue residue from the handlebar.

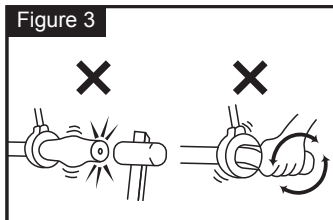
Figure 2



3. Push the heated grip straight onto the handlebar.

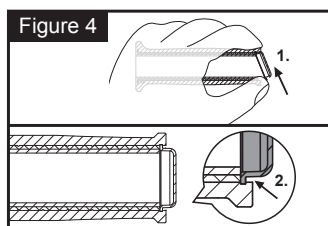
NOTE If the grips are loose; then apply the super glue (Accessory 15) to strengthen the adhesion.

Figure 3



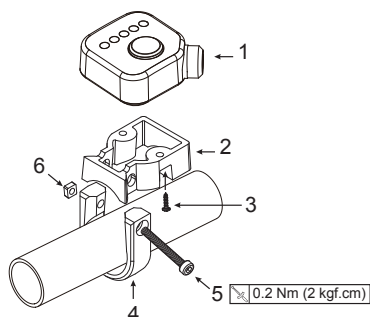
CAUTION!
To install, do not use any tool to knock the grip on. Do not twist the grip by hand or with a tool. By doing so, this can break or damage the wire inside the heated grips.

Figure 4



4. To install the side cap onto the heated grip, insert the top cap into the top groove and then press it downward into the bottom groove.

3-2 Control box installation instructions



Installation steps

1. G switch (Accessory 2)
2. Locking Mount (Accessory 7)
3. M2X8 (Accessory 8)
4. LCD Switch Clamp (Accessory 6)
5. M3XP0.5X25L screw (Accessory 9) $\leq 0.2 \text{ Nm (2 kgf.cm)}$
6. M3 nut (Accessory 10)

3-3 Installation instruction for heated thumb

Follow the steps below for proper installation

Step 1

- Remove old grips by injecting lubricant between grips and handlebar.

Step 2

- Install the heated grips wiring harness.

NOTE See 3-4 for wiring instruction.

Step 3

- Apply the foam on the back of the heated thumb (Accessory 4).

Step 4

- Before installing the heated thumb on the throttle lever, use the abrasive paper (Accessory 13) to clean the throttle lever surface.

Step 5

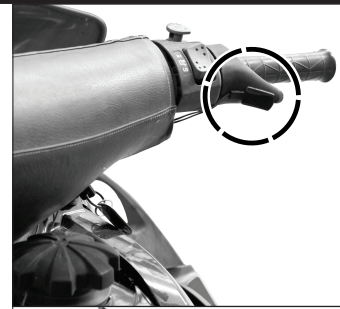
- Install the 3M double face tape (Accessory 14) on the foam and apply the heated thumb on the throttle lever.

Step 6

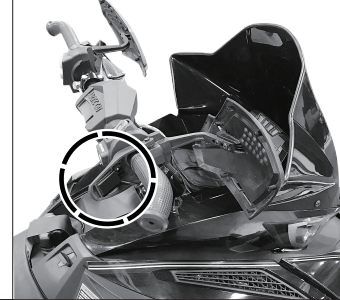
- Install the shrink tube (Accessory 11) over the heated thumb and throttle lever.

NOTE Heated thumb can be installed on either the front or the back of the throttle as shown on pictures 1 and 2.

Picture 1



Picture 2



3-4 Wiring installation instructions

