



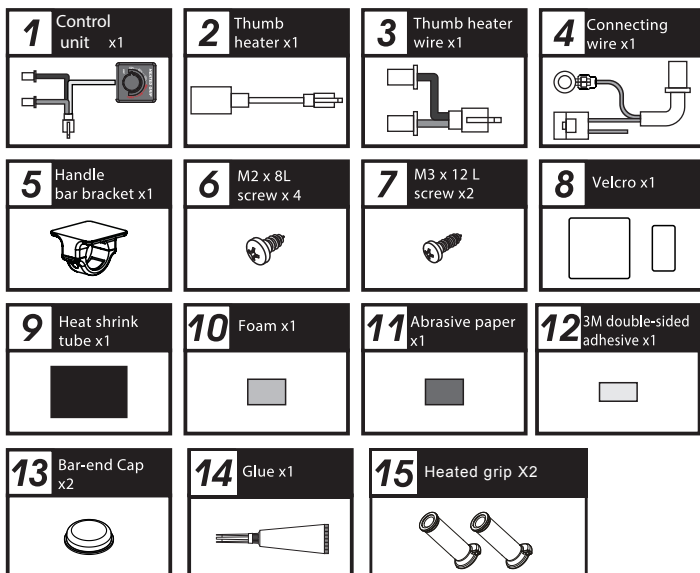
Thanks for purchasing our heated grips. Before installing, read the instruction sheet carefully and retain it for future reference.

## ⚠ ATTENTION!

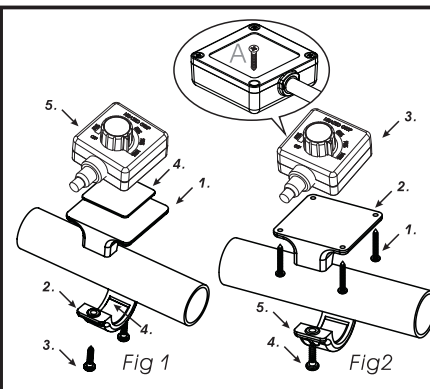
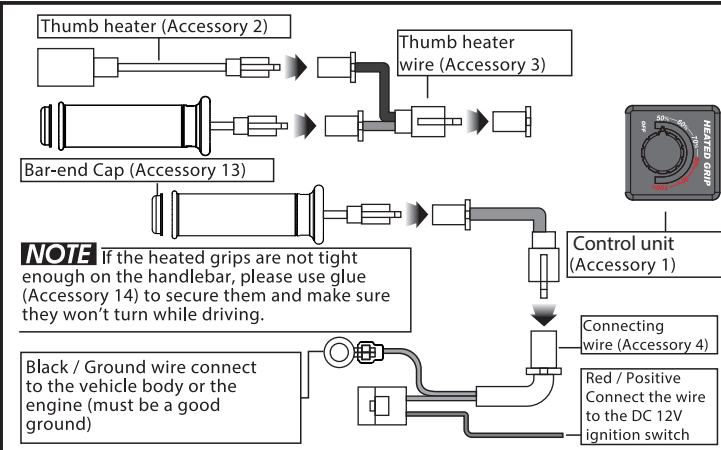
1. For proper installation, follow the steps described in the instruction. Any damages caused by wrong installation shall be imputed to the users.
2. Do not disassemble or change any parts.
3. Opening the heated grip switch will void any warranty. Maintenance should be executed by our professionals.

## READ CAREFULLY!

### 1-1 ACCESSORIES



### 2-1 Wiring installation instruction



**When installing, please follow the steps below.**

1. Handle bar bracket (Accessory 5)
2. Handle bar bracket (Accessory 5)
3. M3 X 12 L screw X2 (Accessory 7)
4. Velcro (Accessory 8)
5. Control unit (Accessory 1)

**A** Secure the handle bar bracket on the handle bar and then stick the Velcro on the bracket. Use the Velcro to stick the switch on the bracket.

**NOTE** If you prefer not to use Velcro, unscrew the 4 screws on the back of the switch. Use the M2 X 8L screws (Accessory 4) to secure the switch on the handlebar bracket.

### 2-2 Installation instruction for heated thumb

#### Follow the steps below for proper installation

##### Step 1

- Remove old grips by injecting lubricant between grips and handlebar.

##### Step 2

- Install the heated grips wiring harness.

**NOTE** See 3-4 for wiring instruction.

##### Step 3

- Apply the foam on the back of the heated thumb (Accessory 4).

##### Step 4

- Before installing the heated thumb on the throttle lever, use the abrasive paper (Accessory 13) to clean the throttle lever surface.

##### Step 5

- Install the 3M double face tape (Accessory 14) on the foam and apply the heated thumb on the throttle lever.

##### Step 6

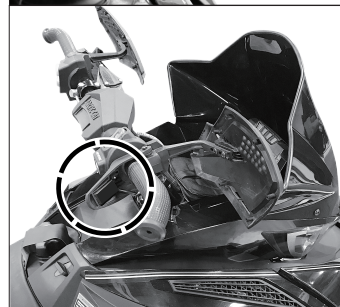
- Install the shrink tube (Accessory 11) over the heated thumb and throttle lever.

**NOTE** Heated thumb can be installed on either the front or the back of the throttle as shown on pictures 1 and 2.

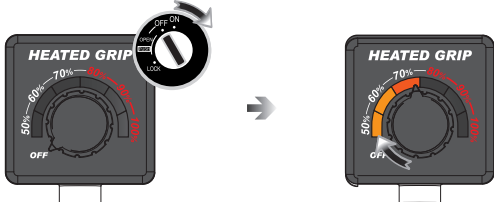
Picture 1



Picture 2



3-1 OPERATIONAL INSTRUCTION



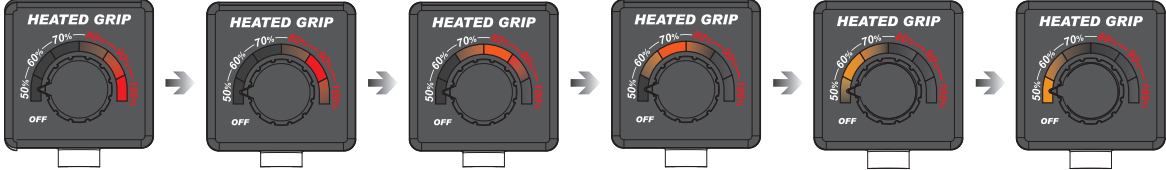
1.Key-ON

2.Turn the switch to the desires heating level.

	Output
OFF	approx. 0%
LED 1	approx. 40%~50%
LED 2	approx. 51%~60%
LED 3	approx. 61%~70%
LED 4	approx. 71%~80%
LED 5	approx. 81%~90%
LED 6	approx. 91%~100%

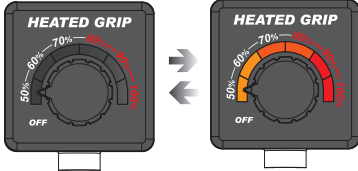
3-2 LED Indicator Warning Function

Flashing from Right to Left



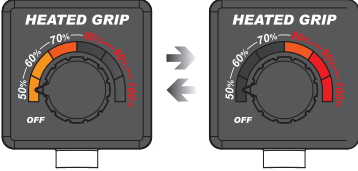
Low Voltage Warning: The voltage warning will go on if the voltage is lower than 12V (DC). When the warning is ON, the switch will automatically cut off the power supply to the heated grips. To stop the warning function: Wait until the voltage of the battery reach 13V or turn the switch to the “OFF” position  
To reactivate the warning function : Wait until the voltage is back to 13 V, or turn off the switch and turn it on again and restart the engine ( Battery need 12 V at least ).  
Note: 1) If the switch is set to ON during the warning, the grips will start heating automatically when voltage is back to 13 V.  
2) If the engine does not turn off, the switch will warn you until the voltage is back to 13 V.

All LED's are Flashing



Short Circuit Protection Warning:  
The system has detected a short circuit.  
To stop the warning lights:  
Turn the switch to OFF position and double check the all wirings to see if there is any possible short circuit.

Flashing from Side to Side



Component Malfunction Warning:  
There is an internal PCB component malfunction.  
To stop the warning lights:  
Turn OFF the power supply and remove the heated grip switch.