



• Thank you for purchasing the KOSO heated grips. Before installing, read the instructions carefully and retain them for future reference.

⚠ ATTENTION!

- For installation, follow the steps on the instruction sheet. Any damage caused by faulty installation shall be imputed to the users.
- Don't break or modify the wires. To avoid a short circuit, do not pull the wires out of the terminals during installing.
- Do not disassemble, alter or change any parts.
- Maintenance or repairs should be executed by our professionals.

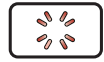
© MARK MEANING:

⚠ Some procedures must be followed to avoid damages occurring to the instrument.

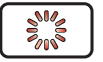
⚠ **WARNING!** Some procedures must be followed to avoid injuries to the user or others.

⚠ **CAUTION!** Some procedures must be followed to avoid damages to the vehicle.

🔧 **READ CAREFULLY!** If any information in the manual remains unclear, seek professional assistance.



FLASH



LIGHT ON

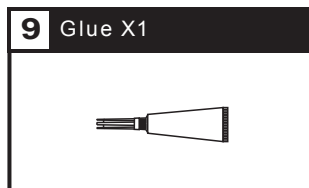
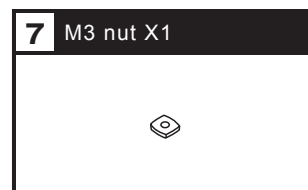
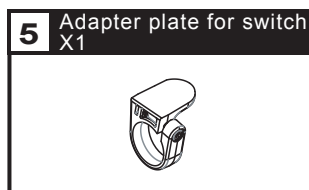
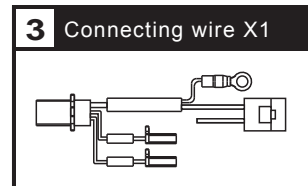
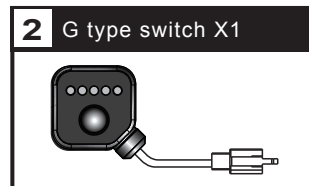
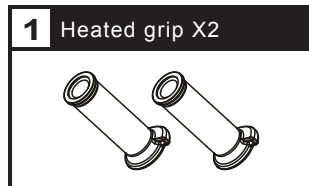


PRESS THE
BUTTON
ONCE



PRESS THE
BUTTON 3
SECONDS

1 Accessories



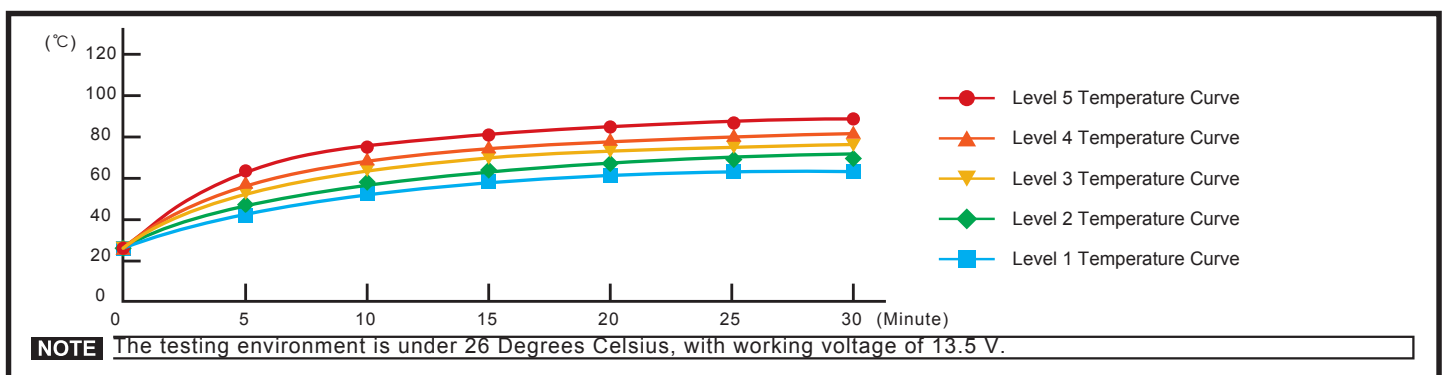
NOTE Contact your local distributor if the items received in the box are not the same as the one listed above.

2-1 Specifications

| | |
|-------------------------------|------------------------------------|
| ● Heating stage | 1st stage (low) ~ 5th stage (high) |
| ● Fuse type | 4A (ATP) |
| ● Effective temperature range | JIS D 0203 |
| ● Voltage | DC 12 V |
| ● Switch size | W38.2 X L38.2 X H16.5 mm |
| ● Switch weight (with wire) | About 88 g |

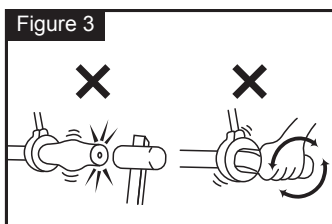
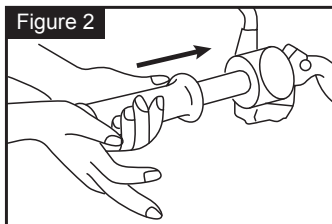
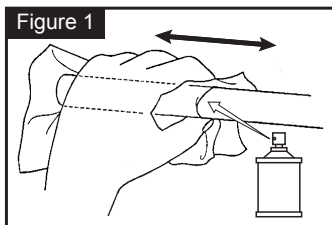
NOTE Design and specifications are subject to change without notice!

2-2 Heated grip testing data



3-1 Practical installation instruction

Heated grips installation procedure

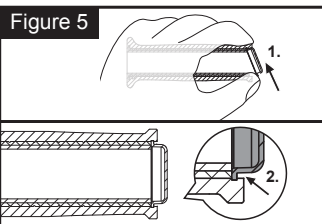
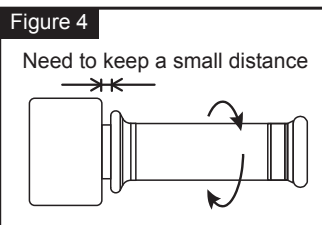


1. Use an appropriate tool to remove the original handlebar grips.
2. Apply a cleaning agent and wipe back and forth to remove the glue residue from the handlebar.

3. Push the heated grip straight onto the handlebar.

NOTE If the heating grip and the handlebar are loose; then apply the super glue (Accessory 9) to strengthen the hold to ensure that there will be no twisting during riding.

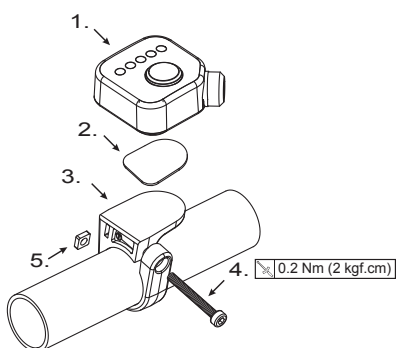
CAUTION! To install, do not use any tool to knock the grip on. Do not twist the grip by hand or with a tool. By doing so, this will break or damage the wire inside the handlebar.



CAUTION! To install the heating grip onto the throttle sleeve, the throttle must maintain a small distance with a surplus distance for wiring; You must test them by rotating back and forth to make sure they can twist.

4. To install the side cap onto the heating grip, insert the top cap into the top groove and then press it downward into the bottom groove.

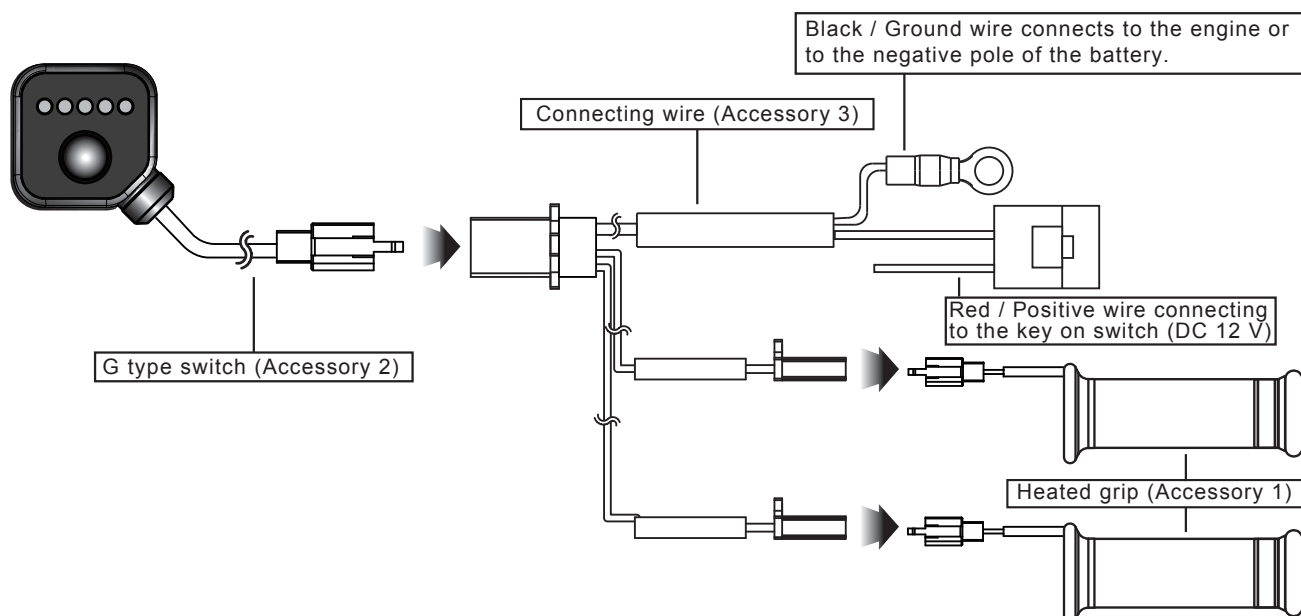
3-2 Control box installation instructions



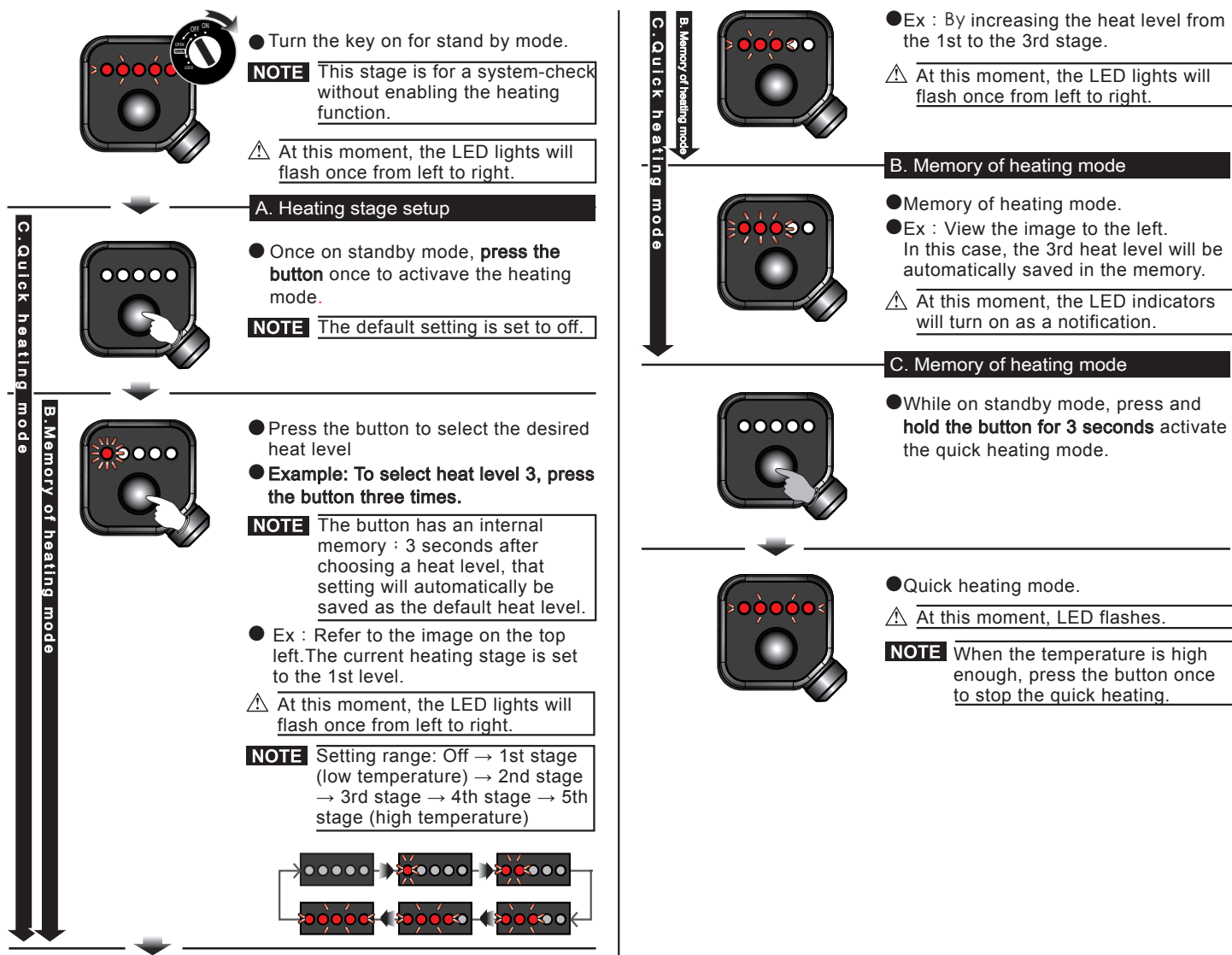
Installation steps

1. G switch (Accessory 2)
2. Velcro (Accessory 4)
3. Adapter plate for switch (Accessory 5)
4. M3XP0.5X25L screw (Accessory 6) $\leq 0.2 \text{ Nm (2 kgf.cm)}$
5. M3 nut (Accessory 7)

3-3 Wiring installation instructions



4-1 Control box instructions



4-2 Low-voltage mode Description



- The heating system will turn off automatically when the voltage is lower than 11.5 V.
- ⚠ At this moment, LED flashes.
- Standby mode will be enabled when the voltage reaches above 11.5 V.

5 Trouble shooting

The following situation does not necessarily indicate a malfunction. View the following points before taking it in for repairs.

| Trouble | Check item | Trouble | Check item |
|----------------------------------|--|---|--|
| LED indication doesn't light up. | <ul style="list-style-type: none"> ● Power supply cable may be disconnected. <ul style="list-style-type: none"> → Check if power supply cable is broken or disconnected. → Check if positive and negative poles are properly connected. ● It might be caused by an improper set-up. <ul style="list-style-type: none"> → Check if setting is under the idle mode. | When turning the key on, the headed grip is not heating up. | <ul style="list-style-type: none"> ● The battery may be running out. <ul style="list-style-type: none"> → Check your battery voltage as soon as possible. ● It may be caused by lack of power. <ul style="list-style-type: none"> → Check if power harness and fuse are broken or disconnected. → Check if positive pole and negative pole are well connected. ● It might be caused by improper installation. <ul style="list-style-type: none"> → Check if all functions are setup properly. Refer to steps 4-1 in the Specification. |

※ If the problem still occurs, please contact your nearest KOSO dealer.