



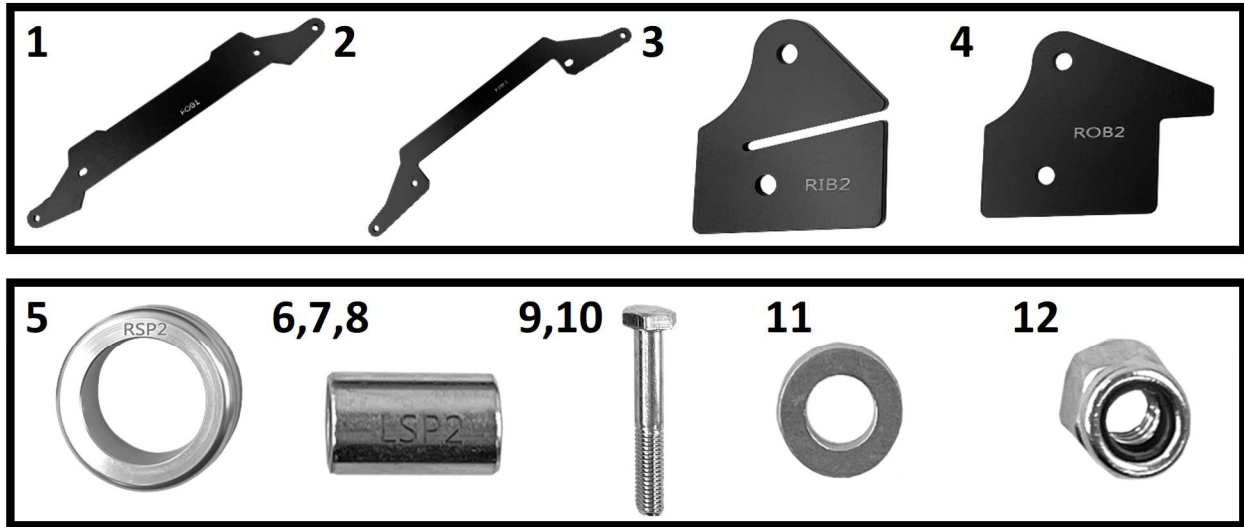
***BRACKET LIFT KIT
INSTALLATION
MANUAL***

PABL-6008HD



WWW.DEMONPOWERSPORTS.COM

Included Components & BOM



PART #	DESCRIPTION	QTY.
1	BRACKET FOB1	1
2	BRACKET FIB1	1
3	BRACKET RIB2	2
4	BRACKET ROB2	2
5	SPRING SPACER RSP2	2
6	SPACER LSP2	2
7	SPACER MSP2	2
8	SPACER SSP2	2
9	M10X70mm HEX BOLT	4
10	M10X60mm HEX BOLT	4
11	M10 WASHER	4
12	M10 LOCK NUT	8



Warning – Important Instructions

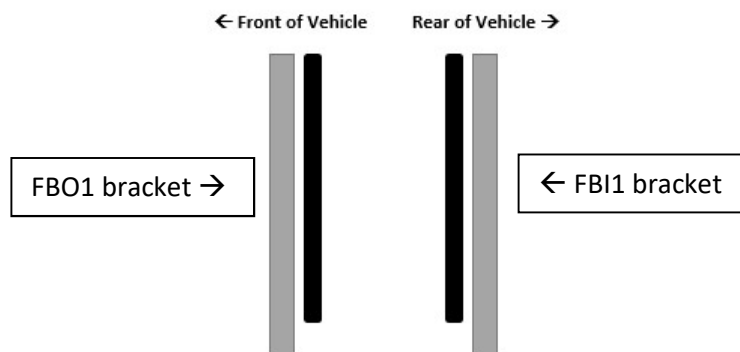
Read instructions carefully anywhere a warning symbol is present

Front Lift Kit Installation Instruction

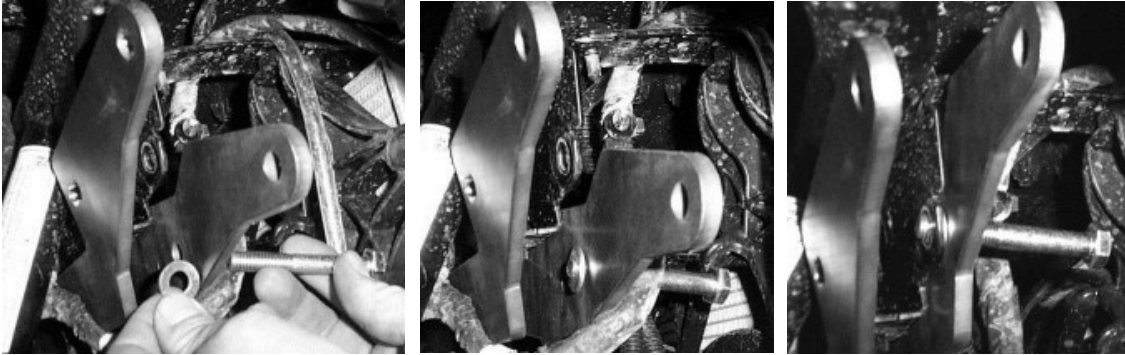
- 1) Elevate the front of the vehicle with jack stands/lift so the wheels are lifted off the ground and the suspension is at full droop. **Note – Ensure the vehicle is stable and safe to operate on before proceeding with the installation.** Place the vehicle in park and engage the handbrake, use wheel chocks to prevent rolling while the vehicle is lifted.
- 2) Remove the front wheels and then disconnect the top of the shocks from the frame.



- 3) Notice a cross member frame that runs between the two shocks mounts. Attached to this frame are wires, a wire harness and vent tube. Disconnect the clips that connect the wires to the cross member and relocate the vent tube. This is required as the 2 brackets will be placed on either side of the cross member, so the wires and vent tube need to be relocated.
- 4) With the components removed from the cross member, use bracket FIB1 and place it along the front frame running it to the outside rear most facing face on the shock mount tab.
- 5) Insert bracket FBO1 to the outside and front most facing face of the shock mount tab.



- 6) Insert an M10x70mm hex bolt through the front outer bracket, placing an M10 washer between the shock mount tab and lift bracket.



- 7) Place spacer LSP2 in-between the shock mount tabs and insert the bolt through the spacer.



- 8) Repeat on the other bracket using another M10 washer and placing it between the shock tab and front inner bracket. Using an M10 lock nut, secure everything together loosely.



9) Repeat these same steps 6 through 8 on the opposite front side.

10) Connect the top of the shock to the newly installed lift brackets using the M10x70mm hex bolt and inserting it from the front rearward side. Using a small spacer SSP2 place it between the shock eyelets and lift plate. Fasten it all together using an M10 lock nut.



11) Repeat step 10 on the opposite front side.

12) Once finished, make sure all fasteners are tightened. Check for any interface or clearance issues on either side of the vehicle. **Place the tires back onto the vehicle and make sure to follow the correct wheel torque specifications.**

Rear Lift Kit Installation Instruction

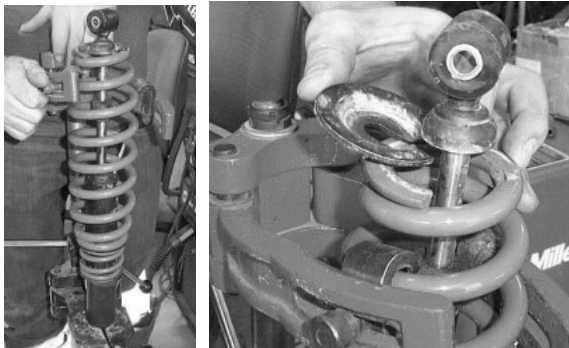
- 1) Elevate the rear of the vehicle with jack stands/lift so the wheels are lifted off the ground and the suspension is at full droop. **Note – Ensure the vehicle is stable and safe to operate on before proceeding with the installation.** Place the vehicle in park and engage the handbrake, use wheel chocks to prevent rolling while the vehicle is lifted.
- 2) Begin by removing the rear wheels and disconnect the top of the shocks from the frame.



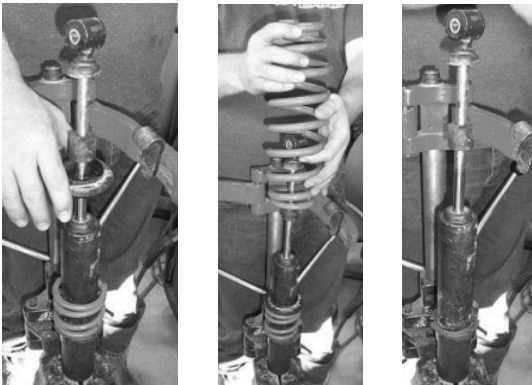
- 3) **IMPORTANT** – if your vehicle is a **POLARIS GENERAL DELUXE** do **NOT** do the following steps that are for installing the spring spacer. Just adjust the preload on the rear shock by 1/2" to achieve the correct additional balance height. Skip to step 8 to proceed with the installation.

For **ALL OTHER VERSIONS of the GENERAL 1000** disconnect the rear shocks from the UTV and follow the below steps

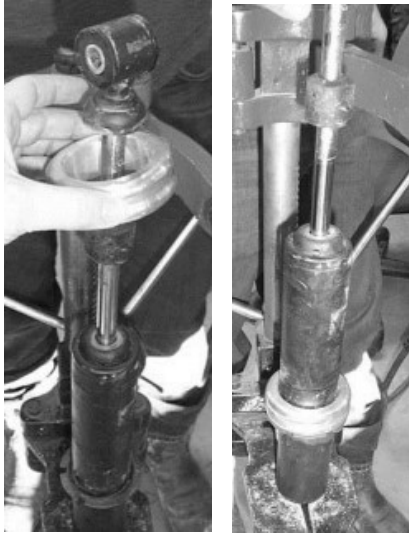
- 4) Using any type of variant of a spring compressor tool, compress the main spring to remove the retaining clip that holds the spring in place.



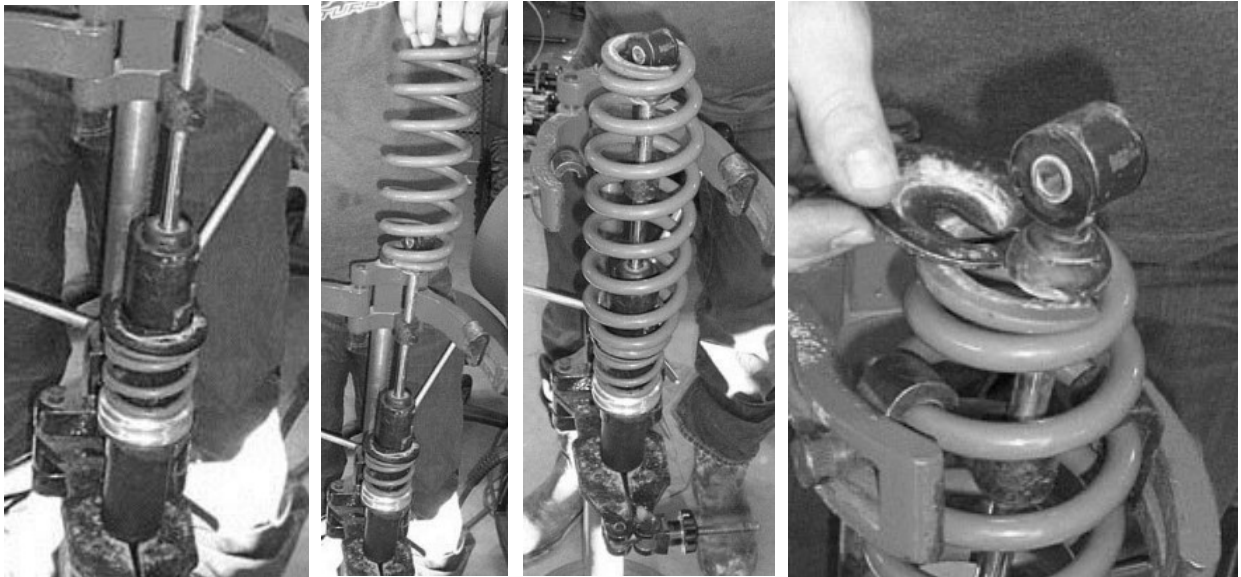
- 5) Once the retainer is removed, remove the spring and then remove the plastic spring collar and helper spring.



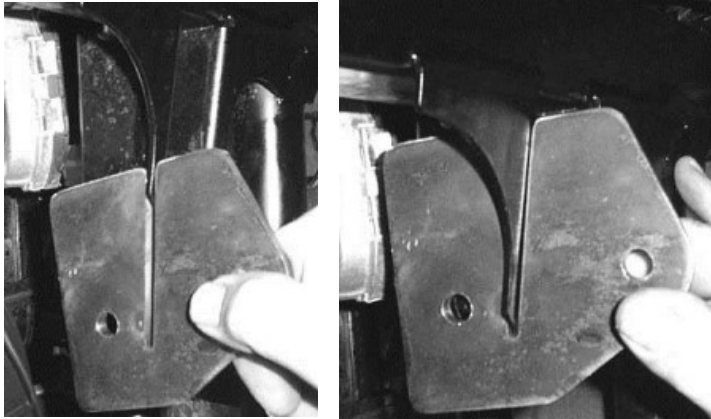
6) Insert the shock spring spacer RSP2 onto the shock.



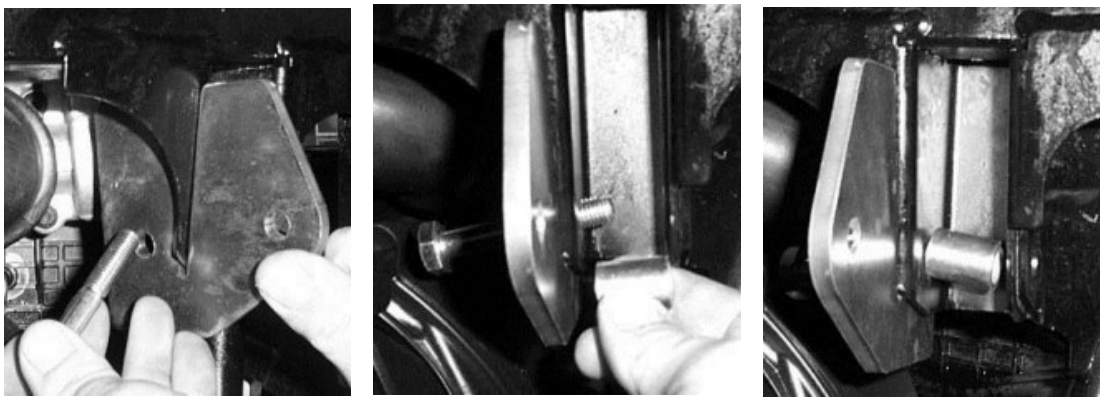
7) Put the helper spring and plastic collar back onto the shock. Then place the main spring back onto the shock. Finish by compressing the main spring to place the retaining clip back onto the shock.



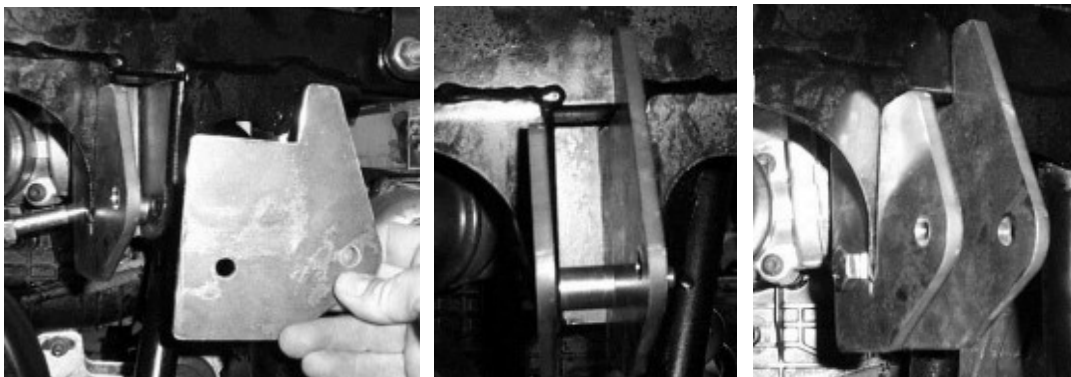
- 8) Starting on the drivers rear side, place bracket RIB2 on the front outside shock mount tab. It should slide into place.



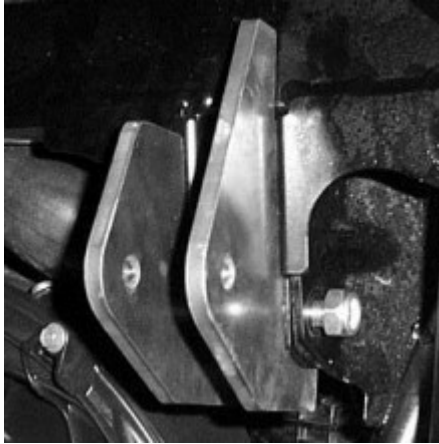
- 9) Use an M10x60mm hex bolt and place it into the shock mount. Then use spacer MSP2 and slide it over the bolt.



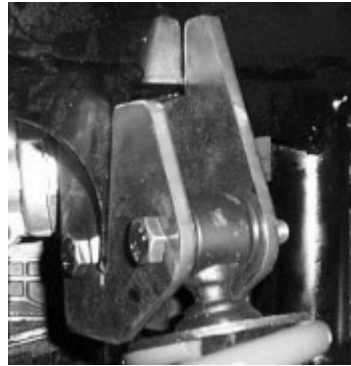
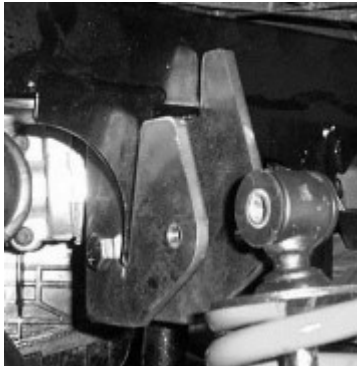
- 10) Using bracket ROB2 place it on the inside of the rear shock mount tab. Pushing the existing bolt from the above step all the way through.



11) Connect the brackets together loosely with an M10 lock nut.



12) Connect the top of the shock to the new mount location on the newly installed lift brackets using the M10x60mm hex bolt and M10 lock nut.



13) Finalize by making sure everything is connected and all bolts and fasteners are fully tightened.

14) Repeat steps 8 through 13 on the opposite side.

15) Once finished, make sure all fasteners are tightened. Check for any interface or clearance issues on either side of the vehicle. **Place the tires back onto the vehicle and make sure to follow the correct wheel torque specifications.**

WWW.DEMONPOWERSPORTS.COM

