



Thank you for purchasing our product. Before installing/operating the product, read the instructions carefully and retain them for future reference.

⚠ Attention!

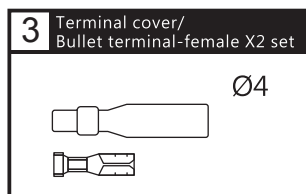
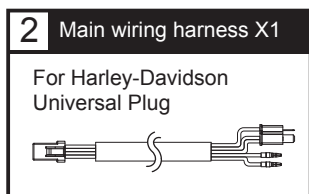
- For installation, follow the steps described. Any damage caused by wrong installation shall be imputed to the users.
- To avoid a short circuit from occurring do not pull or modify the wires during installation.
- Do not disassemble or change any parts. Opening and disassembling this unit will void any warranty.
- Maintenance and repairs should be executed by our professionals only.

NOTE

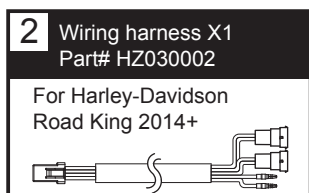
⚠ Some procedures must be followed to avoid damages to the product.

⚠ **WARNING!** Certain procedure must be followed to avoid damages to yourself, to the vehicle or to others.

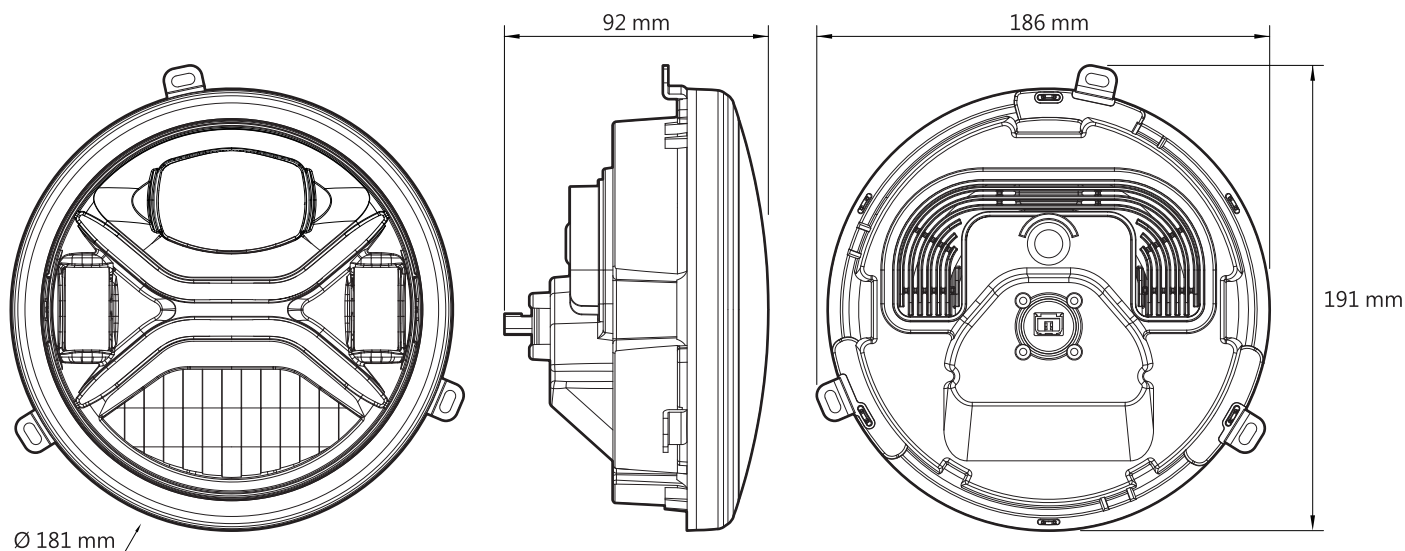
1-1 Accessories



1-2 Optional Accessories



2 Specifications



● Effective temperature range	-10 ~ 60 °C
● Standard	JIS D 0203
● Homologation	E-Mark / DOT Approved
● Size	186 X 191 X 92 mm
● Weight	± 942 g

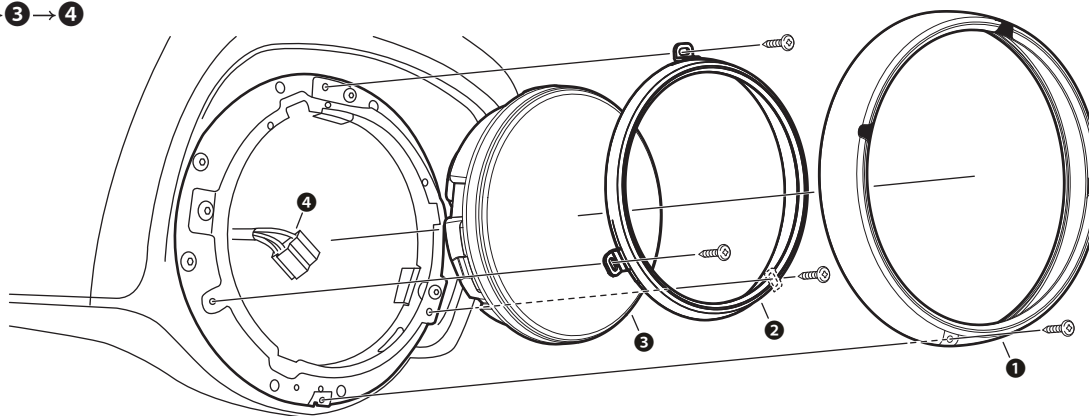
● Effective voltage	DC 10 ~ 16 V
○ Front position	DC 12V / 2.7W
○ Low beam	DC 12V / 24.9W
○ High beam	DC 12V / 20.2W

NOTE Design and specifications are subject to change without notice.

3 Vehicle installation instruction

Disassemble in the following order

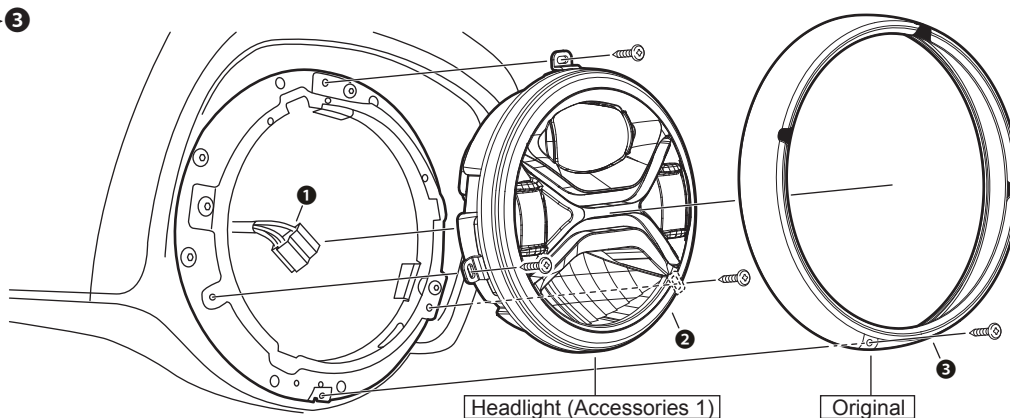
1 → 2 → 3 → 4



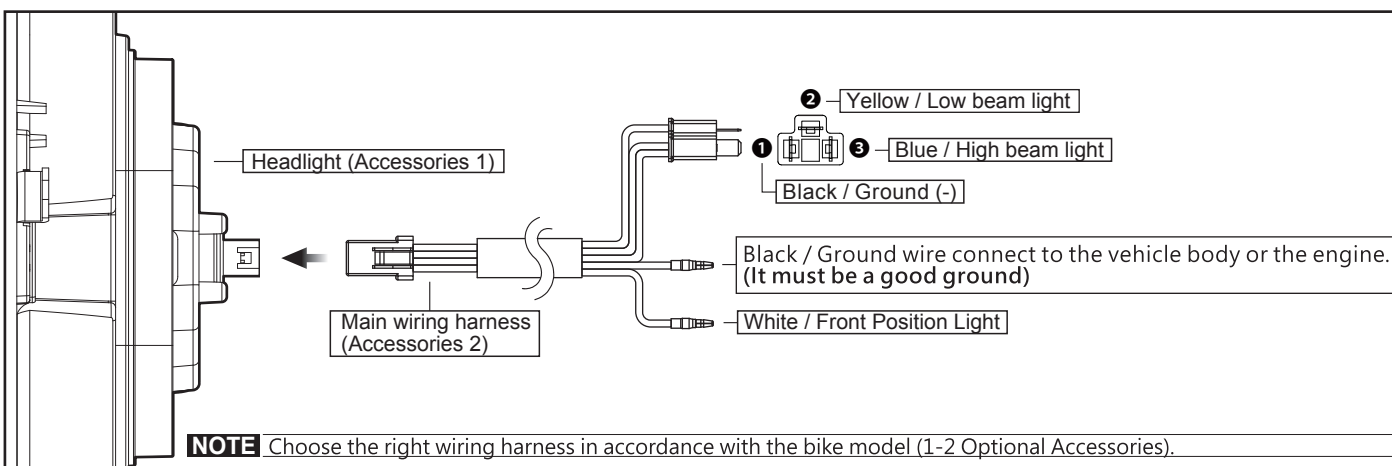
NOTE Keep the stock screws and metal ring 1 for assembly use.

Install in the following order

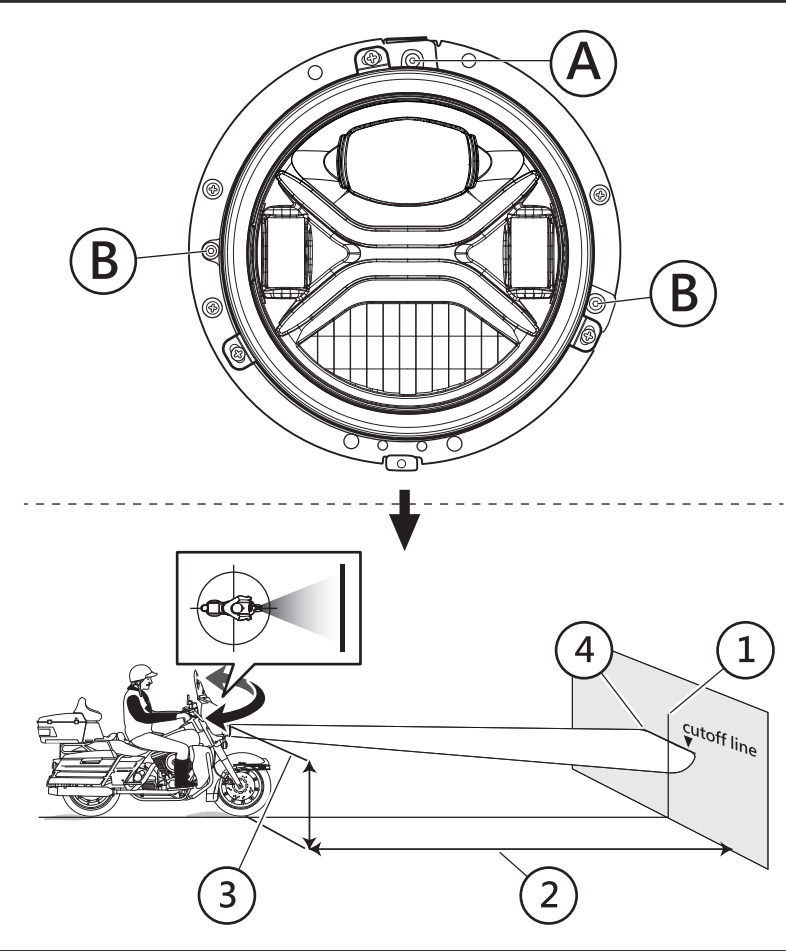
1 → 2 → 3



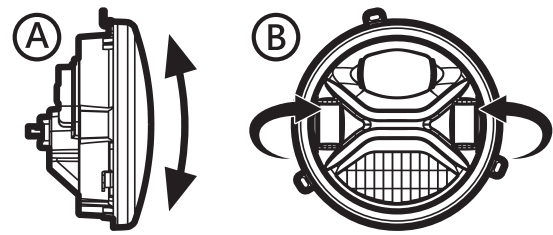
4 Wiring Installation Instructions



5 Headlight beam adjustment



Adjust screw A to align the vertical beam.
Adjust screw B to align the horizontal beam.



⚠ WARNING! If you feel resistance while adjusting, stop screwing to avoid damage.

NOTE Use appropriate tools to adjust.

Adjustment specifications
(refer to original Harley-Davidson manual)

- ① Vertical line
- ② 25 ft (7.6m)
- ③ low beam centerline
- ④ horizontal line

When the tire pressure is normal, have one person sit on the bike, move the bike to 25 ft (7.6m) away from the wall. Measuring the height of the centerline of the low beam and drawing a responding horizontal line and a vertical line and it will create the cutoff line. The low beam needs to be lower than the cutoff line.

6 Troubleshooting

The following situations do not indicate malfunctions of the product. Check the following before taking it in for repair.

Trouble	Check item
No LED indicator lighting up.	<ul style="list-style-type: none">●Power supply cable may be disconnected.<ul style="list-style-type: none">→Check if power supply cable is broken or disconnected.→Check if positive and negative poles are properly connected.

※ If the problems still cannot be solved, contact our technical department for assistance.